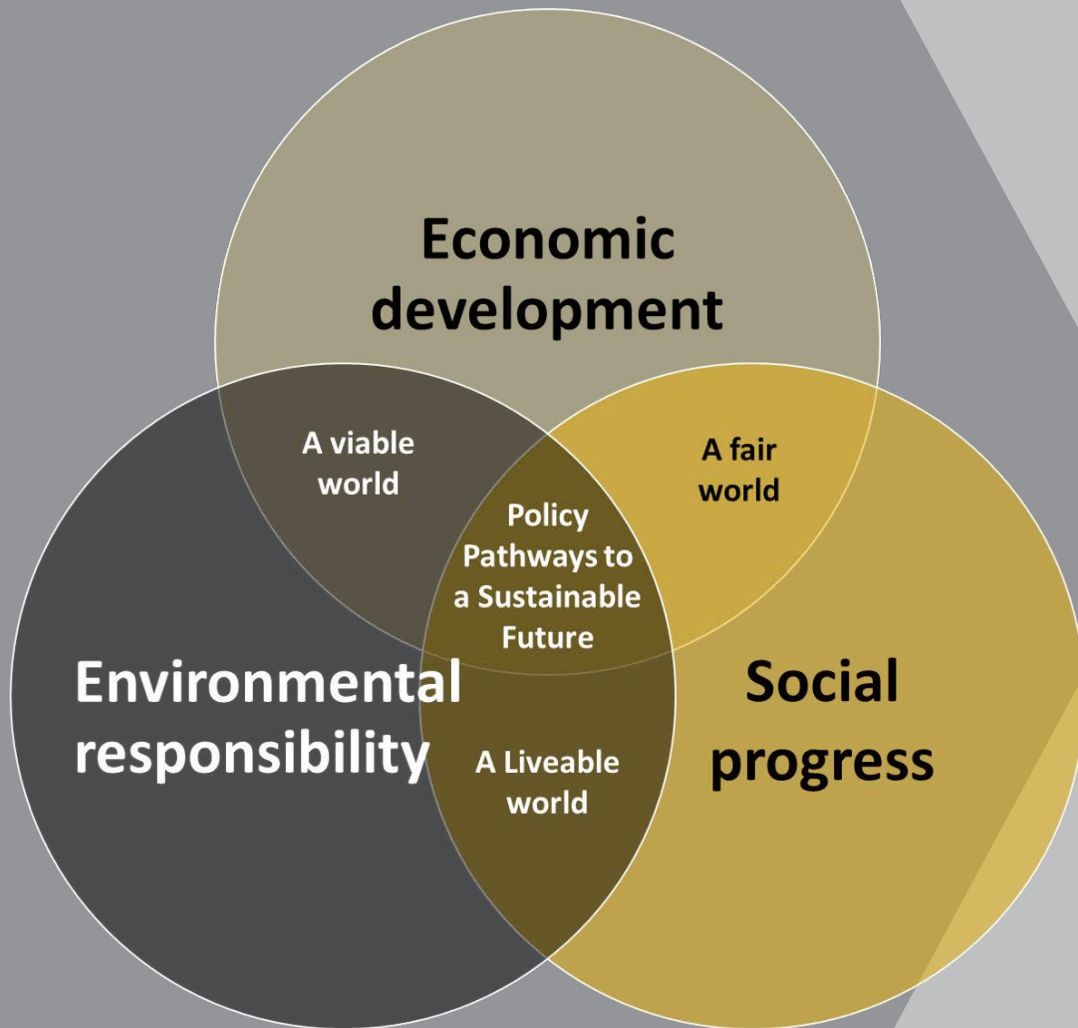


» SCHOOL OF PUBLIC POLICY

MASTER & CERTIFICATE OF SUSTAINABLE ENERGY AND ENVIRONMENTAL MANAGEMENT (MSEEM and CSEEM)





FEATURES

- Georgia Tech’s School of Public Policy - ranked #12 by U.S. News and World Report in E&E Policy and Management
- Practical training based on a comprehensive, flexible program of study: online or on-campus.
- Hands-on experience with real-world sustainability projects, learning under Atlanta-based employers.
- Fully funded Fellowships available and cost-competitive tuition.

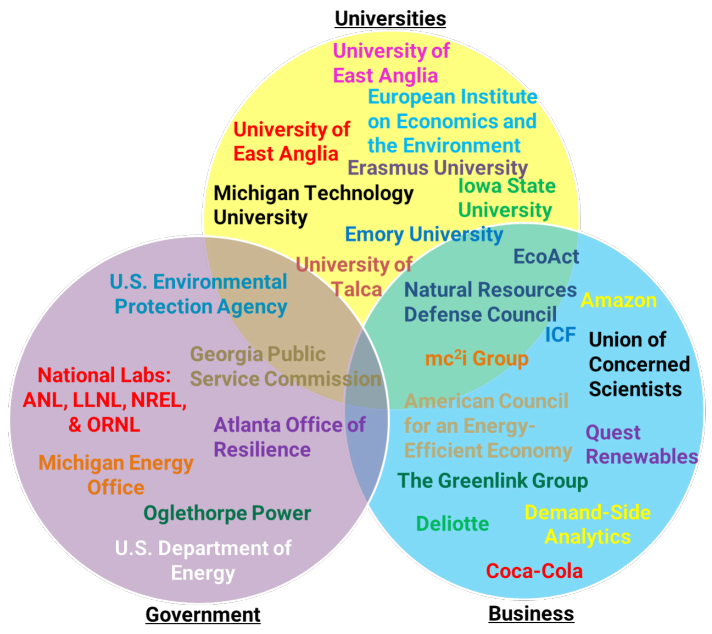
THE RISE OF SUSTAINABLE ENERGY AND ENVIRONMENTAL MANAGEMENT

The public and private sectors in Georgia and beyond are strengthening their commitment to sustainable practices. There is a growing interest in socially responsible business practices, clean energy and environmental policies, and stakeholder engagement through nongovernmental organizations (NGOs). At a time when the world’s energy, communication, transportation and water infrastructures are undergoing transformational change, Georgia Tech proposes to deliver fact-based policy expertise to the next generation of leaders in these industries and associated public agencies and NGOs.

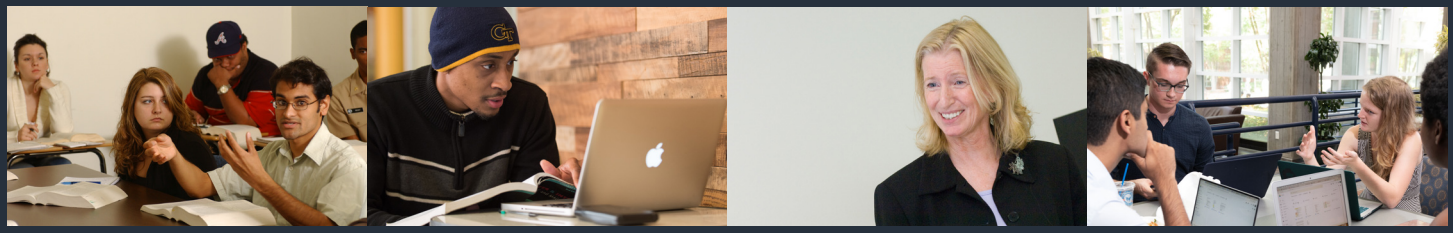
With global urbanization and increasing concerns about the nation’s “natural capital,” the interdisciplinary nature of the field makes Georgia Tech’s School of Public Policy (SPP) an ideal fit to ground a professional degree in sustainability. With the interdisciplinary skills that SEEM graduates would gain in this professional graduate program, they will be equipped with the training to fill much-needed positions throughout the state of Georgia, as well as around the United States and the world.

The program takes an innovative and integrative approach to sustainability that prioritizes the management of Earth’s systems and resources through an understanding of best practices.

Where our graduates work



SPP.GATECH.EDU



THE CURRICULUM

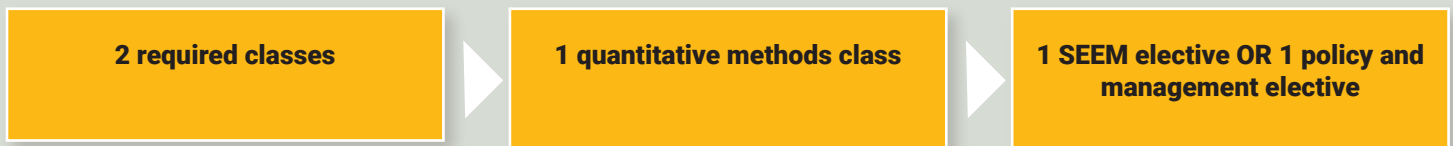
MSEEM can be completed either full time (4-4-2 courses in a single year) or part time (2-2-1 courses each year for 2 years). The graduate Certificate is offered as a stand-alone option or as part of the MSEEM curriculum. The programs are available either on-campus or online.



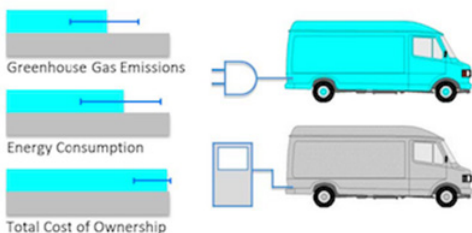
The Sustainable Energy and Environmental Management curriculum is a multi-disciplinary program with courses taught in schools across the Georgia Tech campus. These include Public Policy, Business, Industrial and Systems Engineering, City and Regional Planning, Civil and Environmental Engineering, and Economics among others.

SAMPLE COURSE OF STUDY

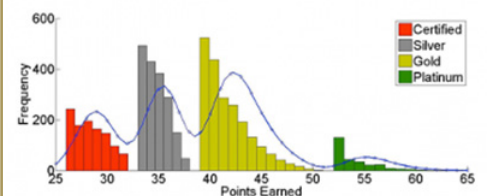
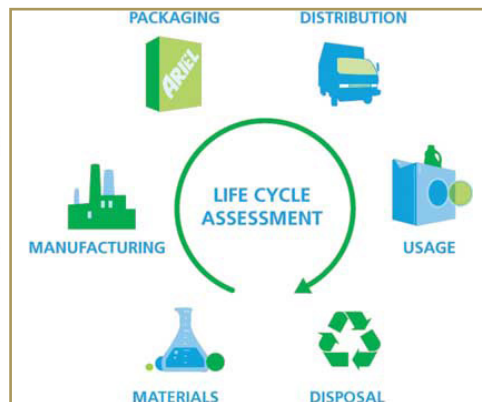
CSEEM: Certificate of Sustainable Energy and Environmental Management



MSEEM: Master of Sustainable Energy and Environmental Management



Electric Urban Delivery Trucks: Energy Use, Greenhouse Gas Emissions, and Cost-Effectiveness



Metrics for New LEED Construction

Our Alumni

The School of Public Policy graduated almost 800 students with over 400 from the Master program creating an impressive network of accomplished professionals. Our alumni hold leading positions in large private firms, government agencies, and non-government organizations both in the United States and abroad.

Our Students

The School of Public Policy aspires to attract MSEEM students who are dedicated to mastering the science of sustainability and passionate about putting their education into practice. Online students will be drawn from a cross section of businesses, industries, and organizations with a range of sustainable initiatives, as well as those who are looking to change careers.

Our Faculty

Courses are taught by expert faculty, including renowned practitioners in fields ranging from environmental law to alternative energy financing, as well as researchers who are leaders in environmental management, Earth science, and engineering. The program utilizes environmental and sustainable development research and practitioner experience to provide practical training in sustainability management to a new generation of professionals who will address critical interdisciplinary issues.



Omar Asensio
Data Science Policy
Management



Marilyn Brown
Energy policy modeling
Smart Grid Policies
Renewables and EVs



Michael Elliott
Environmental Planner
Mediator



Alice Favero
Environmental economics
Climate Policy
Natural resource economics



Scott Ganz
Social organization
Spatial economic analysis
Impacts of carbon tax



Emily Grubert
Infrastructure policy
Energy-water nexus
Modeling societal values



Gordon Kingsley
Public Management
Policy Partnerships
Policy Implementation



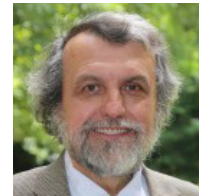
Emanuele Massetti
Climate Change Economics
Climate Policy



Daniel Matisoff
Environmental Policy
Energy Policy Analysis



Bryan Norton
Sustainable Theory
Sustainable Practice



Michael Rodgers
Transportation and Energy
Air Quality
Environmental Science



Valerie Thomas
Environmental Modeling
Energy Modeling
Life cycle analysis

The Georgia Institute of Technology is a leading research university committed to improving the human condition through advanced science and technology.

ADMISSIONS

You will join Master of Sustainable Energy and Environmental Management students from a variety of backgrounds. Many have work experience before joining the program and others come straight from earning an undergraduate degree.

Although many of our students are building on the value of their science or engineering backgrounds by adding public policy expertise, others are enhancing their liberal arts or policy degrees with a greater understanding of science and technology implications for public policy. Ours is a diverse, international student body, and we encourage students with an interest in public policy to apply, whatever their background.

The application is online at: <http://grad.gatech.edu/apply-now>

You will need the following information to complete your application for either the MSEEM or CSEEM:

- Official transcripts from all schools attended.
- Graduate Record Examination test scores.
- TOEFL scores for international applicants who do not hold a degree from an English-speaking institution.
- Admissions essays.
- Three letters of recommendation.
- Application fee.

Estimated Program Costs (*Tuition fees, and charges are subject to change)

	MSEEM*	CSEEM*
In-state student participating on-campus:	\$20,658	\$8,263
Out-of-State student participating on-campus:	\$39,503	\$15,802
Online student:	\$35,729	\$13,454

Approximately 5 fully funded fellowships are available for on-campus MSEEM students

Deadlines to apply for MSEEM (Full time):

Fall enrollment: Feb 15 (priority), and June 15 (if space is available);

Deadlines to apply for MSEEM Program (Part time) and CSEEM program:

Fall enrollment: Feb 15 (priority), and June 15 (if space is available)

Spring Enrollment: Oct 31

For More Information

» **Alice Favero**
Academic Professional and Associate
Director of Graduate Studies
alice.favero@gatech.edu

» **Dr. Juan Rogers**
Director of Graduate Admissions
(404) 894-6697
jdrogers@gatech.edu

Contact us at: mseem@pubpolicy.gatech.edu

CREATING THE NEXT[®]



Georgia Tech  **Public Policy**
Ivan Allen College of Liberal Arts
spp.gatech.edu