

DRAWDOWN GA

PHASE II: ACTIVATING & TRACKING DRAWDOWN SOLUTIONS



Tracking the GHG Footprint of Georgia's Counties and Metro Areas

Goal: Develop a GHG tracking system for Georgia to underpin Drawdown Georgia activation

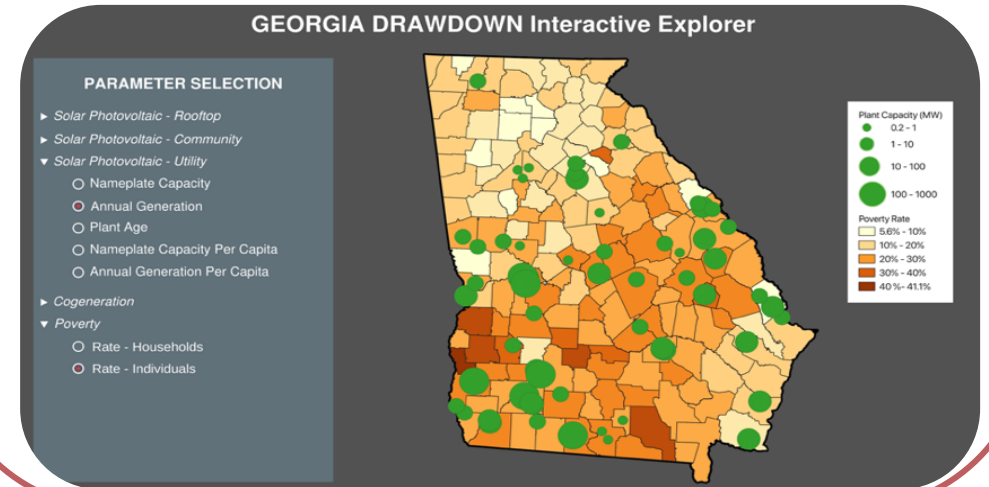
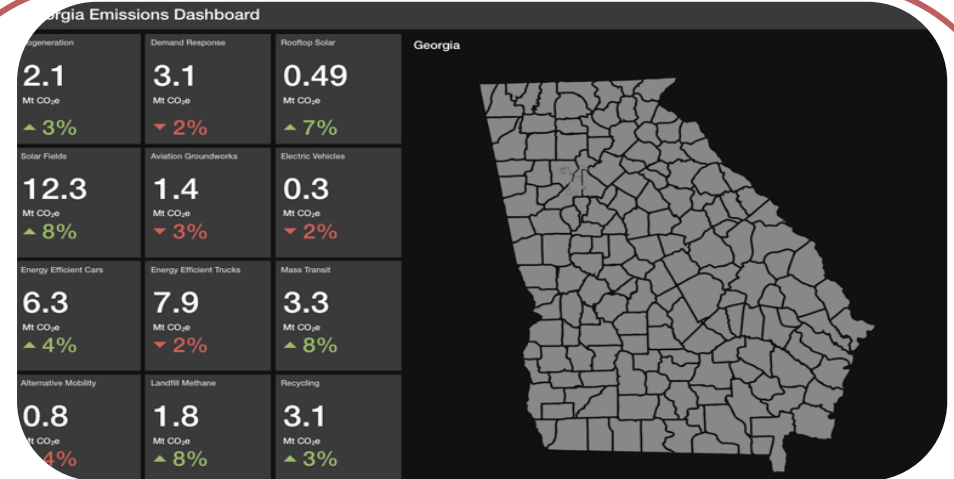
“You can’t manage what you can’t measure, and metrics motivate action.”

Outcomes:

Produce a GHG emissions and sinks tracking dashboard that provides monthly, county level, and sector specific data.

Opportunities for gamification as counties will be able to compare their footprints.

Promote innovative approaches that will position Georgia as a leader in climate action.



Business Engagement on Drawdown Georgia

Goal: Make the output of Georgia Drawdown accessible to business decision makers and leverage a data-driven approach to stimulating interest in individual and collective commitments



“Active engagement of the business community is of the greatest value to achieve Drawdown reductions.”



Supported by data collection and reporting efforts, uncover high impact corporate opportunities for carbon mitigation in Georgia.



Facilitate a Georgia “climate club” where businesses and other organizations commit to providing Georgia specific data and/or participate in collective GHG emission reduction commitments.

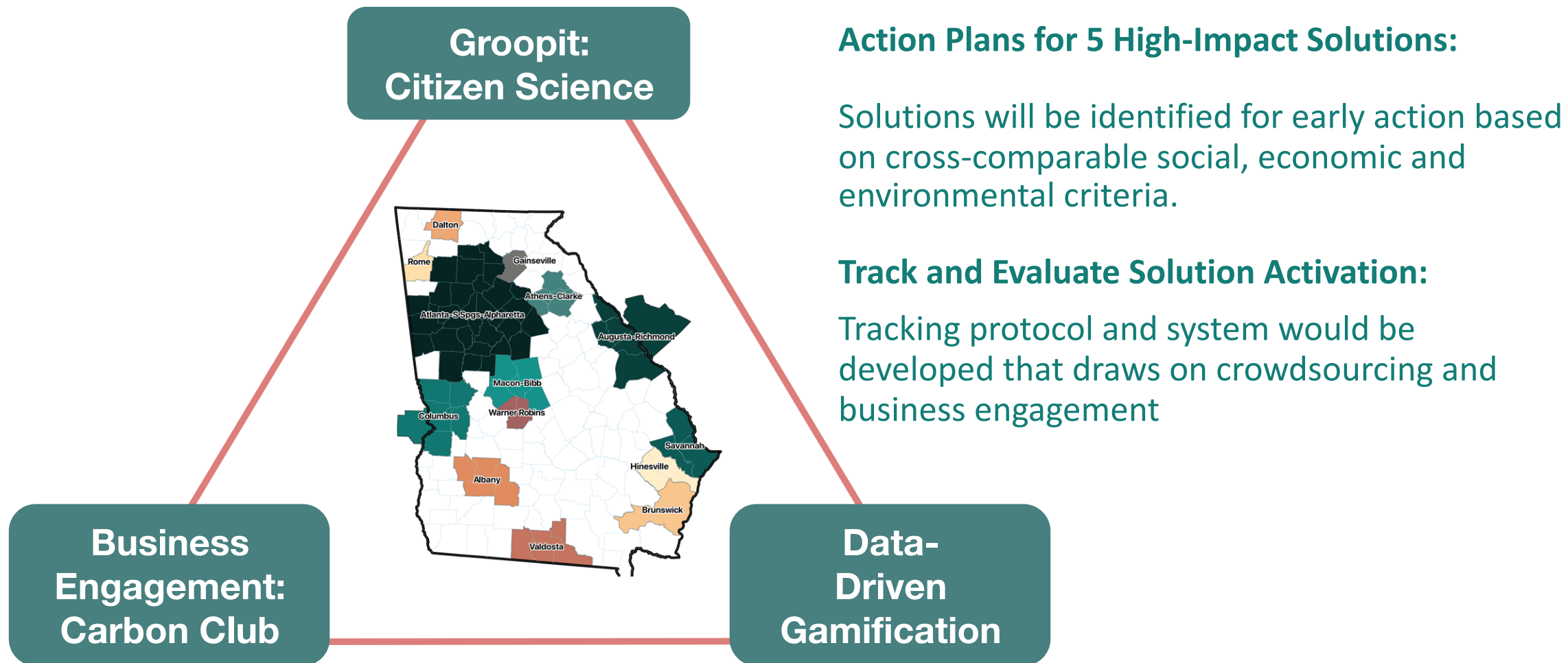


Offer access to technical expertise on Drawdown solutions.



Tracking Solution Activation and Its Effectiveness

Goal: *Triangulate approaches to activate high-impact solutions in Georgia*



Georgia's 15 metro areas cover 81 of its counties

For more information:

Drawdown@gatech.edu

and Drawdownga.org and

<https://cepl.gatech.edu/projects/Drawdown-Georgia>